

Plug-In

Frequency Mixer

Level 7 (LO Power +7 dBm) 800 to 1250 MHz

TFM-12+



CASE STYLE: B13

Maximum Ratings

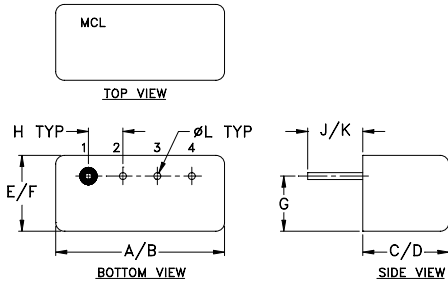
Operating Temperature	-55°C to 100°C
Storage Temperature	-55°C to 100°C
RF Power	50mW
IF Current	40mA

Permanent damage may occur if any of these limits are exceeded.

Pin Connections

LO	4
RF	1
IF	2
GROUND	3
CASE GROUND	3

Outline Drawing



Outline Dimensions (inch/mm)

A	B	C	D	E	F
.480	.500	.390	.405	.210	.230
12.19	12.70	9.91	10.29	5.33	5.84
G	H	J	K	L	wt
.16	.100	.14	.20	.020	grams
4.06	2.54	3.56	5.08	0.51	2.3

Features

- low conversion loss, 5.71 dB typ.
- good L-R isolation, 35 dB typ.
- rugged welded construction
- hermetically sealed

Applications

- cellular
- ISM/GSM
- PCS
- GPS

Electrical Specifications

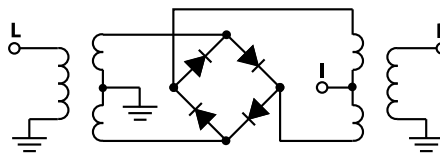
FREQUENCY (MHz)	CONVERSION LOSS (dB)	LO-RF ISOLATION (dB)		LO-IF ISOLATION (dB)	
		Typ.	Min.	Typ.	Min.
800-1250	50-90	6.86	0.14	7.5	

1 dB COMP.: +1 dBm typ.

Typical Performance Data

Frequency (MHz)	Conversion Loss (dB)	Isolation L-R (dB)	Isolation L-I (dB)	VSWR RF Port (:1)	VSWR LO Port (:1)
745.22	675.22	7.40	38.23	28.83	3.64
805.68	735.68	7.28	37.29	28.22	3.48
866.15	796.15	7.19	36.88	27.64	3.27
926.61	856.61	7.08	36.55	27.18	3.05
987.08	917.08	6.95	36.61	26.63	2.78
1067.70	997.70	6.86	36.59	25.81	2.47
1128.16	1058.16	6.90	36.19	25.33	2.38
1208.78	1138.78	7.03	35.63	24.79	2.33
1269.25	1199.25	7.06	35.09	24.32	2.28
1349.87	1279.87	7.12	34.04	23.84	2.19

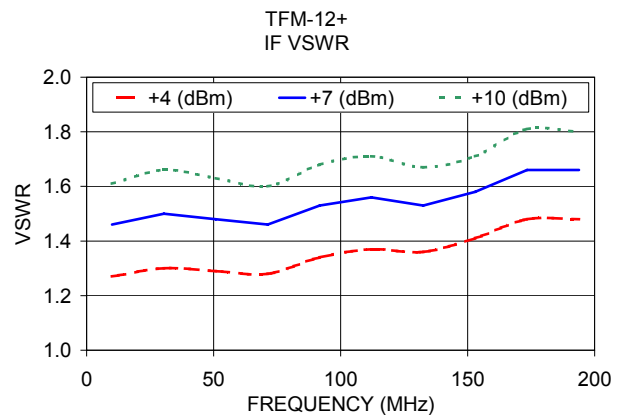
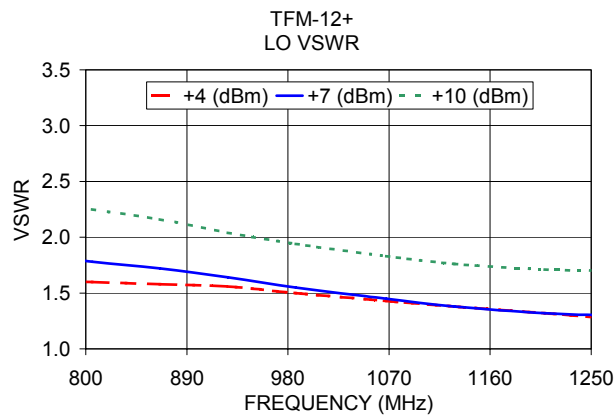
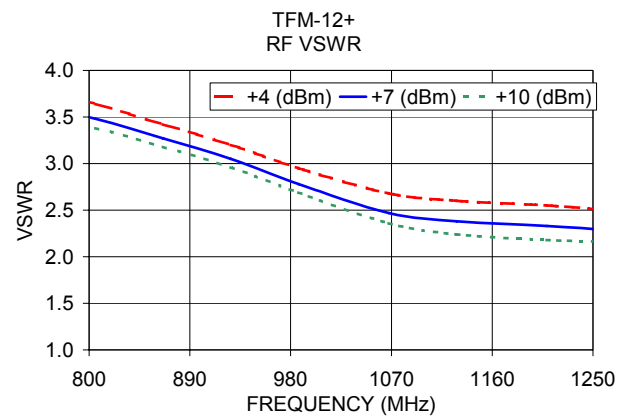
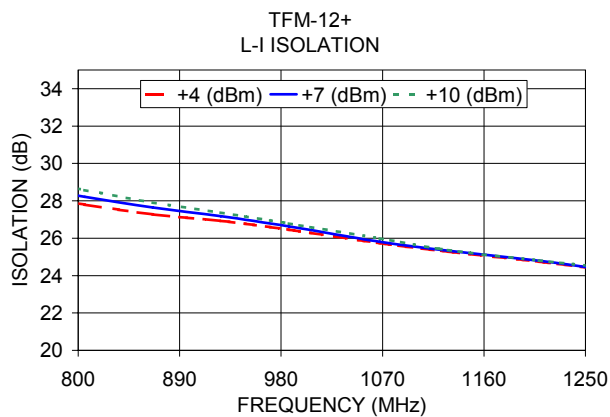
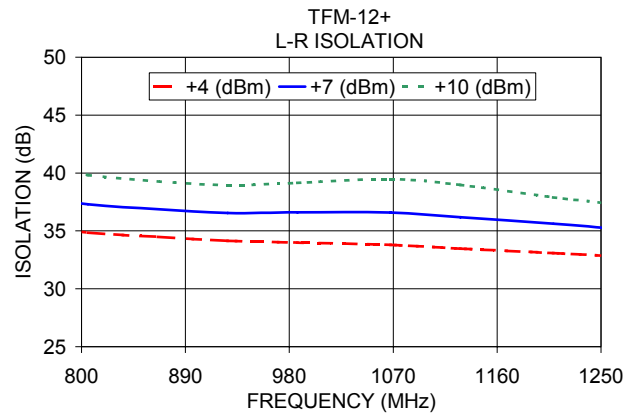
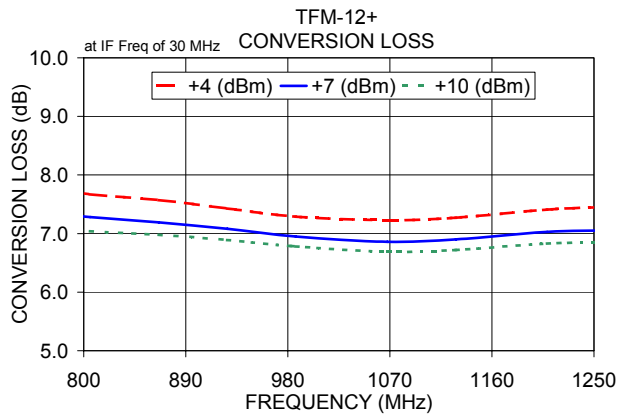
Electrical Schematic



Notes

- Performance and quality attributes and conditions not expressly stated in this specification document are intended to be excluded and do not form a part of this specification document.
- Electrical specifications and performance data contained in this specification document are based on Mini-Circuit's applicable established test performance criteria and measurement instructions.
- The parts covered by this specification document are subject to Mini-Circuits standard limited warranty and terms and conditions (collectively, "Standard Terms"); Purchasers of this part are entitled to the rights and benefits contained therein. For a full statement of the Standard Terms and the exclusive rights and remedies thereunder, please visit Mini-Circuits' website at www.minicircuits.com/MCLStore/terms.jsp





Notes

- A. Performance and quality attributes and conditions not expressly stated in this specification document are intended to be excluded and do not form a part of this specification document.
- B. Electrical specifications and performance data contained in this specification document are based on Mini-Circuit's applicable established test performance criteria and measurement instructions.
- C. The parts covered by this specification document are subject to Mini-Circuits standard limited warranty and terms and conditions (collectively, "Standard Terms"); Purchasers of this part are entitled to the rights and benefits contained therein. For a full statement of the Standard Terms and the exclusive rights and remedies thereunder, please visit Mini-Circuits' website at www.minicircuits.com/MCLStore/terms.jsp

